



Instructions

66 FORD RANGER AND RANGER RAPTOR BED RAIL AND ACCESSORIES

Thank you for purchasing your Ford Ranger and Ranger Raptor Bed RAIL(s) from AAL! We greatly appreciate your trust in our company. We take that purchase and your commitment to us very seriously. If you have any questions along the way, please don't hesitate to give us a call at 385.202.4188.

****Please read these instructions thoroughly before starting this project.****



NOTE: These instructions cover the assembly and installation of (1) Rail Assembly and applicable modifications

Tools Required:

There is more than one tool for every job, but below is the list of tools we use for this installation.

Tools listed are for assembly only, as disassembly tools will vary.

- M4 Allen Wrench/Socket
- M5 Allen Wrench/Socket
- 10mm Wrench/Socket
- 13mm Wrench/Socket

Hardware included:

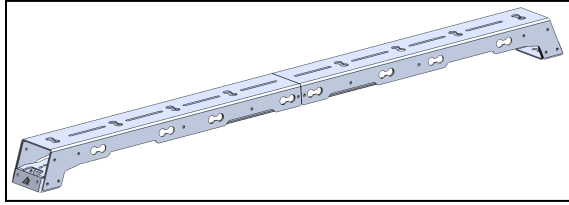
M6x14mm Button Head Bolts	28	M8x50mm Button Head Bolts	4
M6x18mm Button Head Bolts	2	M8 Flat Washers	4
M6 Nylock Nuts	28	M8 Nylock Nuts	4

Part Overview and Prep

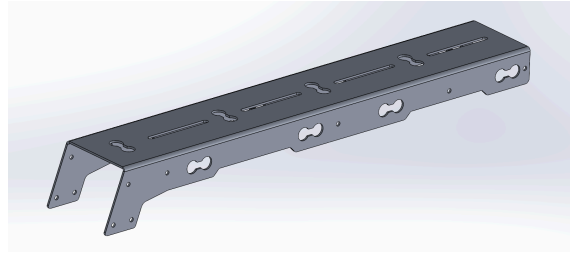
First lets review images of all the necessary parts and hardware to ensure we have everything we need for the installation process



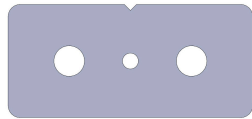
Bed Rail Parts



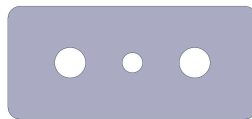
Rail (2):



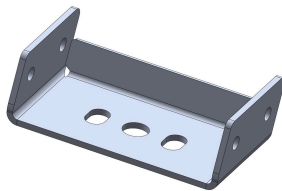
Threaded Spacer (2):



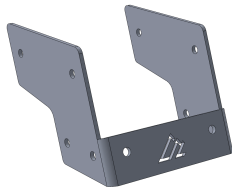
Spacer (10):



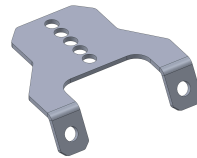
Base Bracket (2):



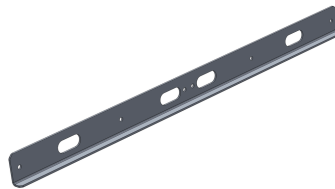
Rail Rack (2):



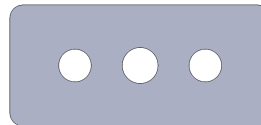
Light Bracket (2):



Connector Rails (2):



Floating Spacer (2):



Hardware

M6x14mm Button Head Bolts

28



M6x18mm Button Head Bolts

2



M6 Nylock Nuts

28



M8x50mm Button Head Bolts

4



M8 Flat Washers

4



M8 Nylock Nuts

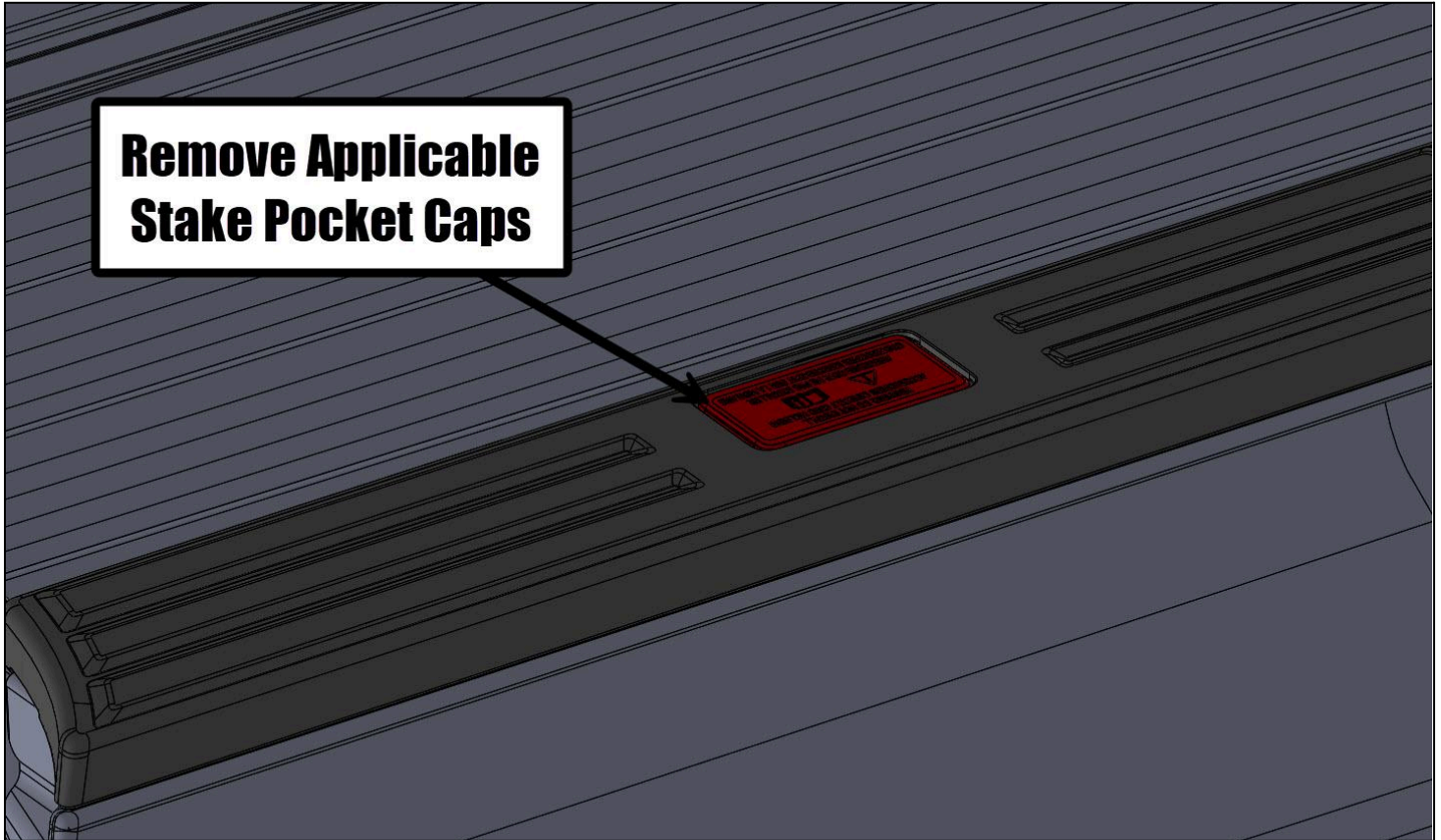
4



Teardown and Prep

First things first, we need to remove the stake pocket caps in the locations you will be installing your bed rail(s). See **Diagram 1** for identification.

Diagram 1



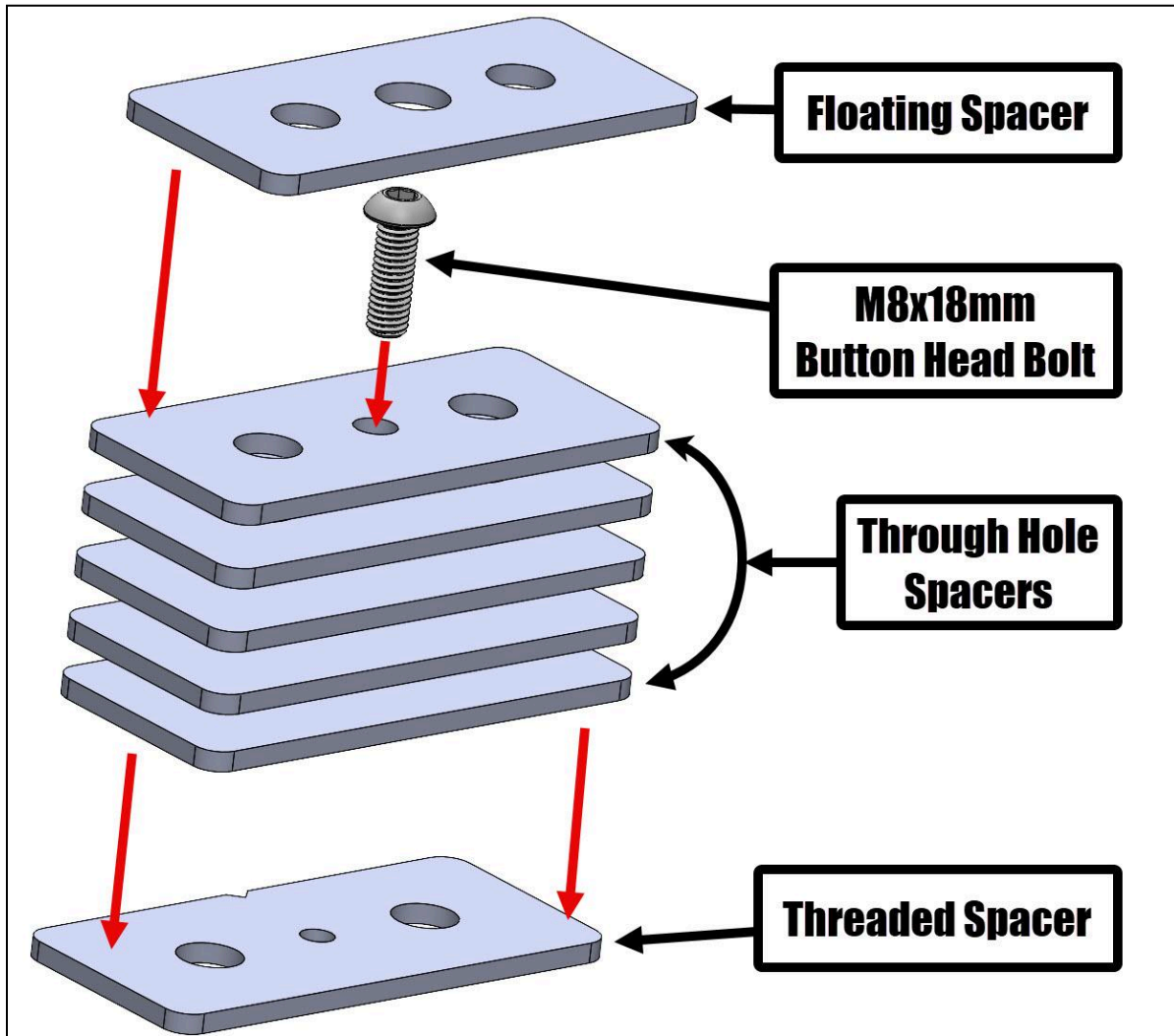
That's pretty much it! This completes the teardown.
You can now move on to assembly!



Step 1 - Assemble and Install Spacer Packs

Using (2) M6x18mm Button Head bolts, assemble (2) Spacer packs as shown in **Diagram 2**.

Diagram 2

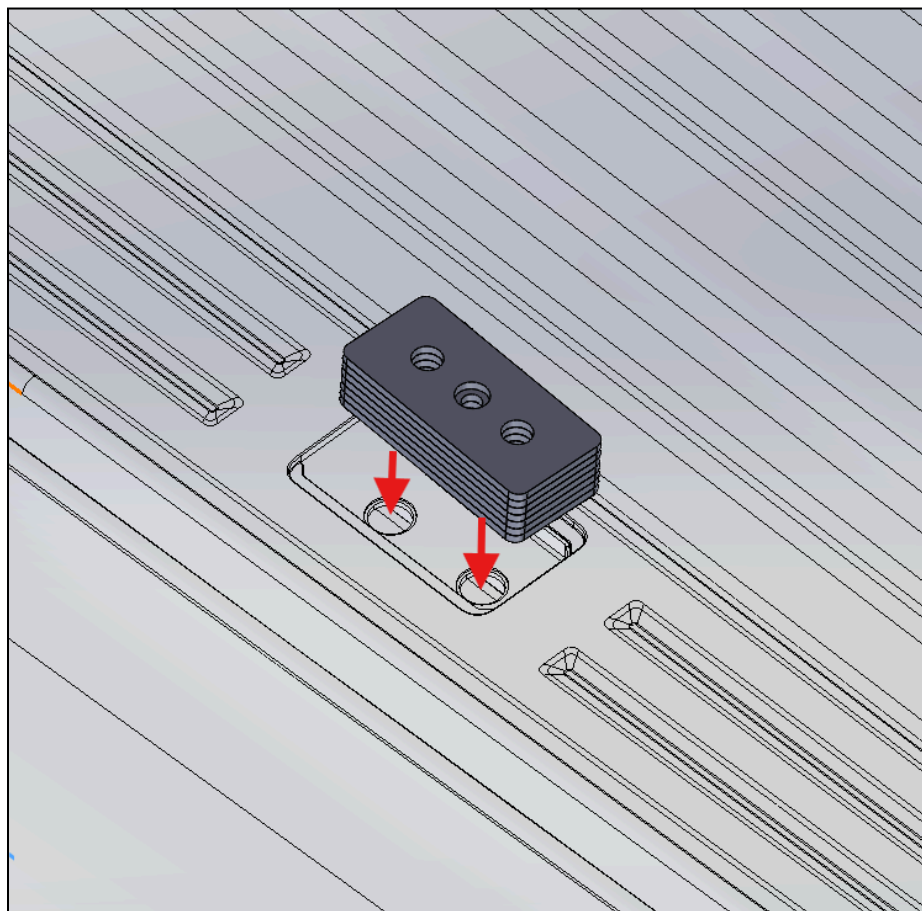


NOTE - The “Floating” Spacers are designed to sit on top of the spacer packs, and will only be used in the set of stake pockets closest to the cab. You will not need the floating spacers in any of the other rail locations.

Now that you have put together the spacer packs, place them in the stake pockets oriented as shown in **Diagram 3**.



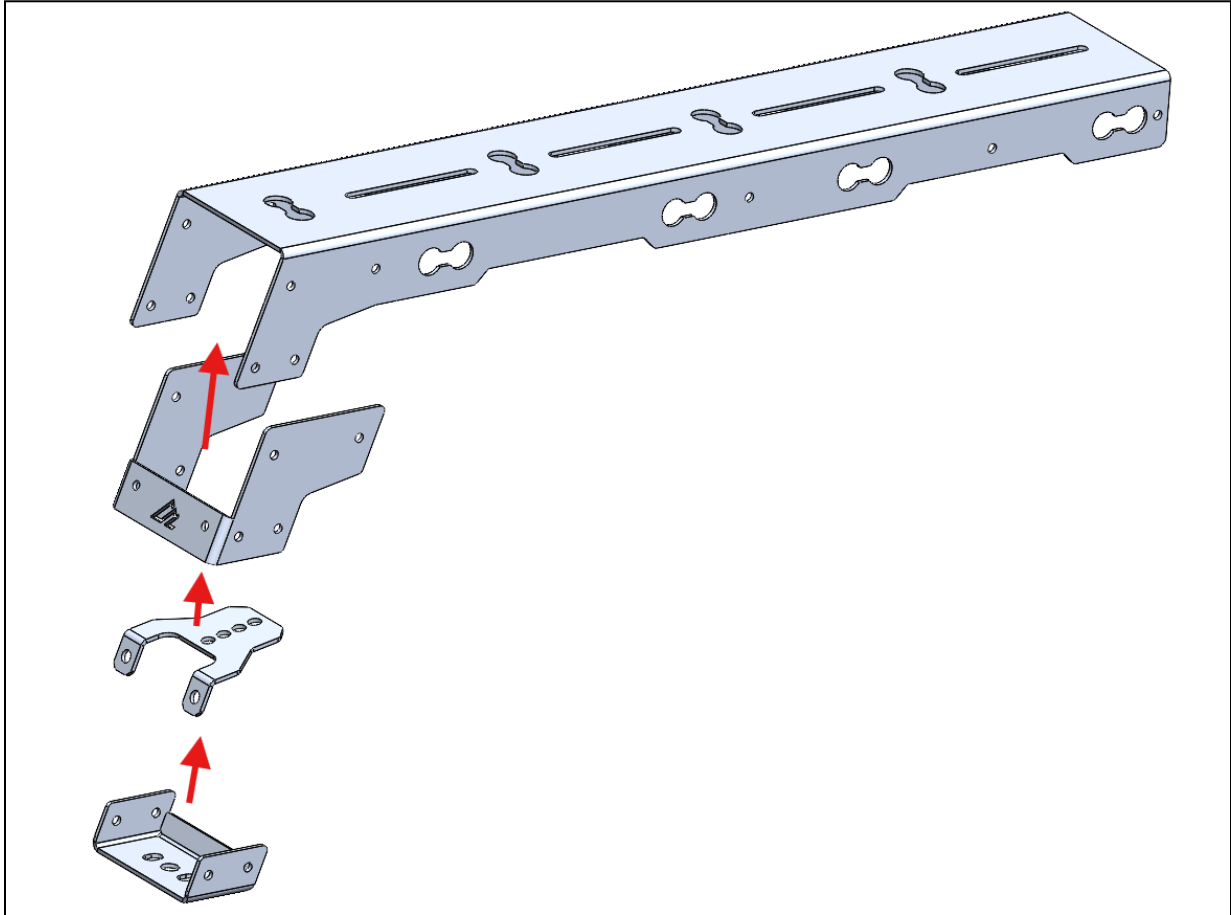
Diagram 3



Step 2 - Assemble the Rail Halves

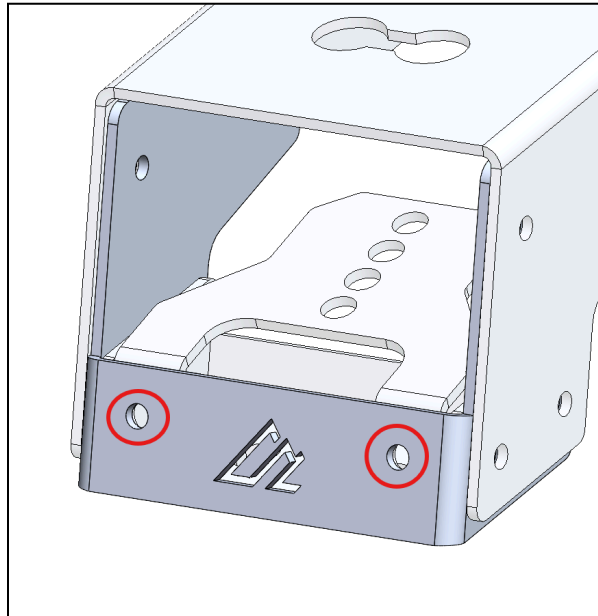
Now that the spacers are in place, it is time to assemble the rail.

On a flat surface, locate the Base Bracket, Light Bracket, Rail Rack, and Rail. Once you have all 4 components, collapse them on top of one another as shown below

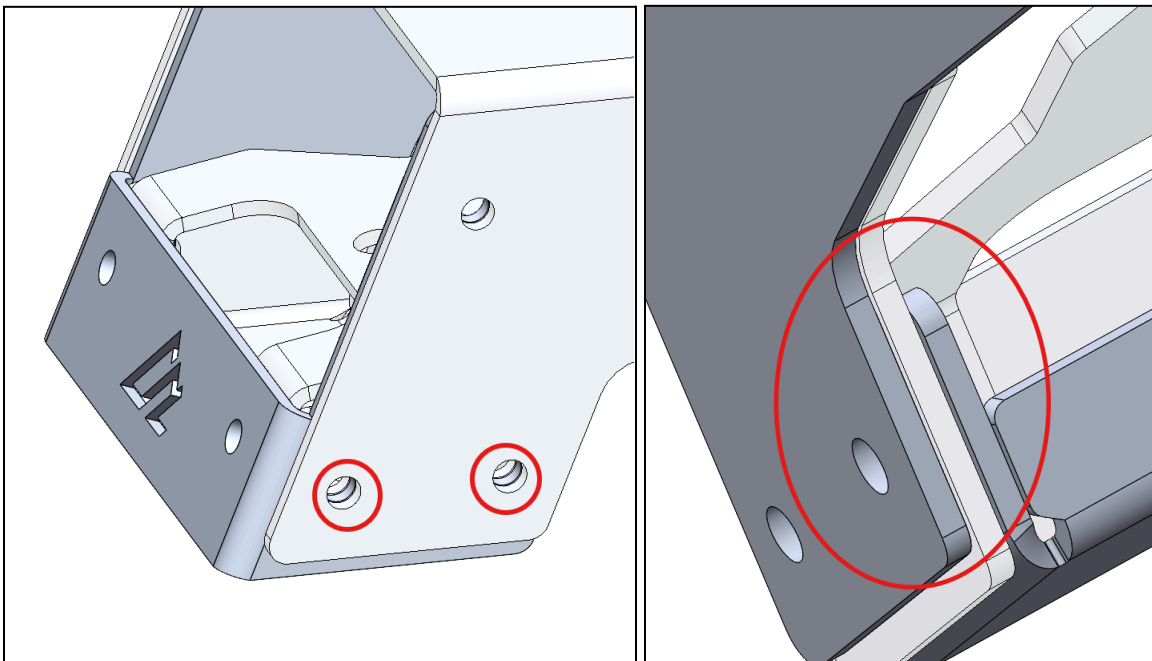


The following holes should align concentrically:

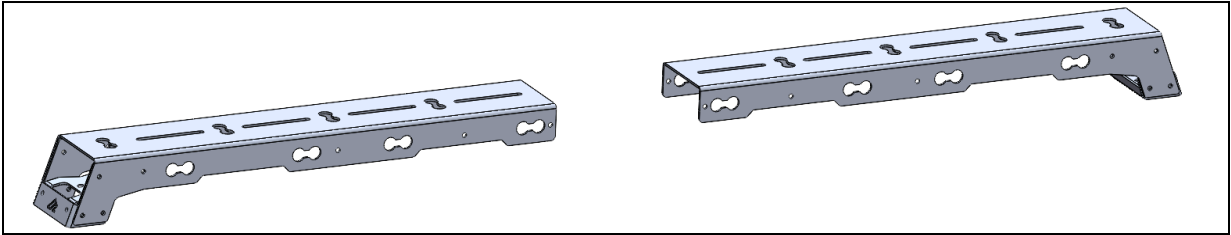
- 1) The Light Bracket and Rail Rack face. Fasten using (2) M6x14mm Button head bolts and (2) M6 locknuts



- 2) The Rail, Rail Rack, and Light Bracket. Since these holes are concentrically aligned between three parts and the spacing is larger, we'll use (4) M6x18mm button head bolts and (4) M6 Locknuts to fasten these components together.

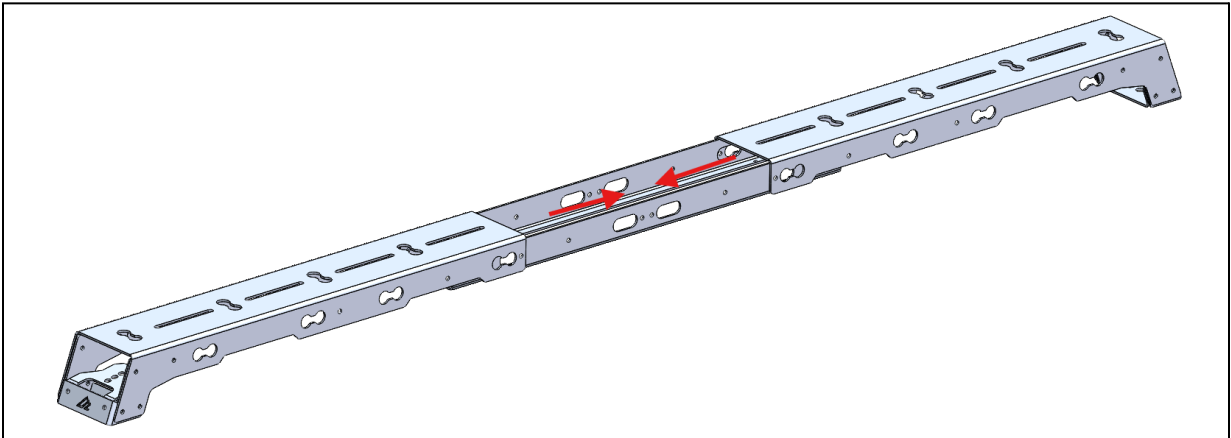


Once these pieces are fastened, repeat the exact same process with the other rail pieces until you have 2 identical fixtures.

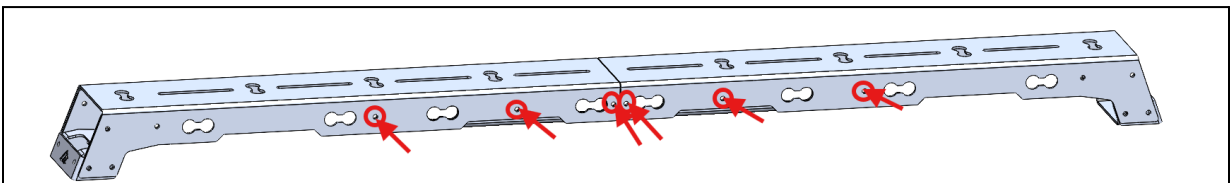


Step 3 - Attach the Rail Halves to one another

We will attach the 2 rails to one another using the 2 Connector Rails as shown below

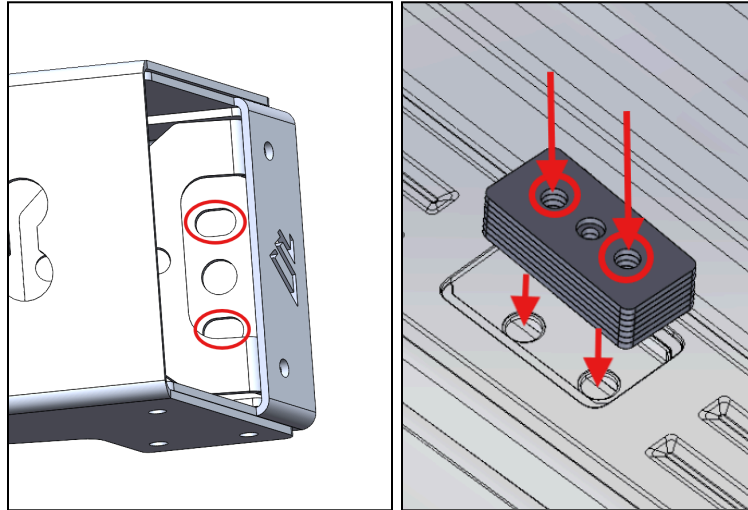


Then on both sides, Fasten the connectors to the two rail fixtures using (6) M6x14 button head bolts and (6) M6 Locknuts per side.

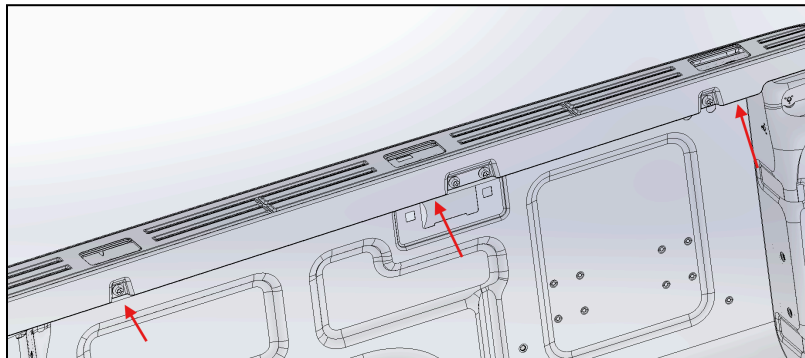


Step 4 - Attach the Rail to the Truck Bed

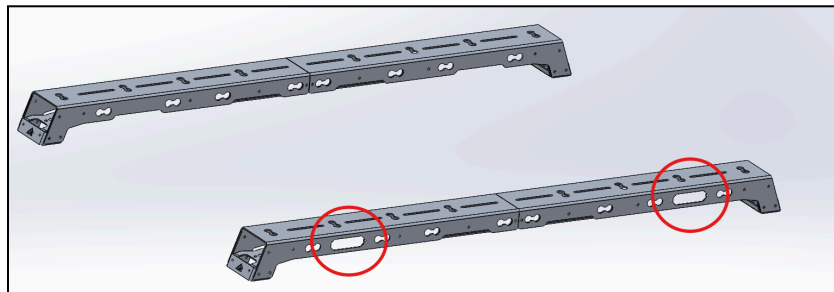
We will attach the rails to the truck bed frame using (2) 8x50mm button head bolts, (2) M8 washers, and (2) M8 locknuts per side. These will go through the Base Bracket here:



The Nuts can be attached from the underside in the spaces below



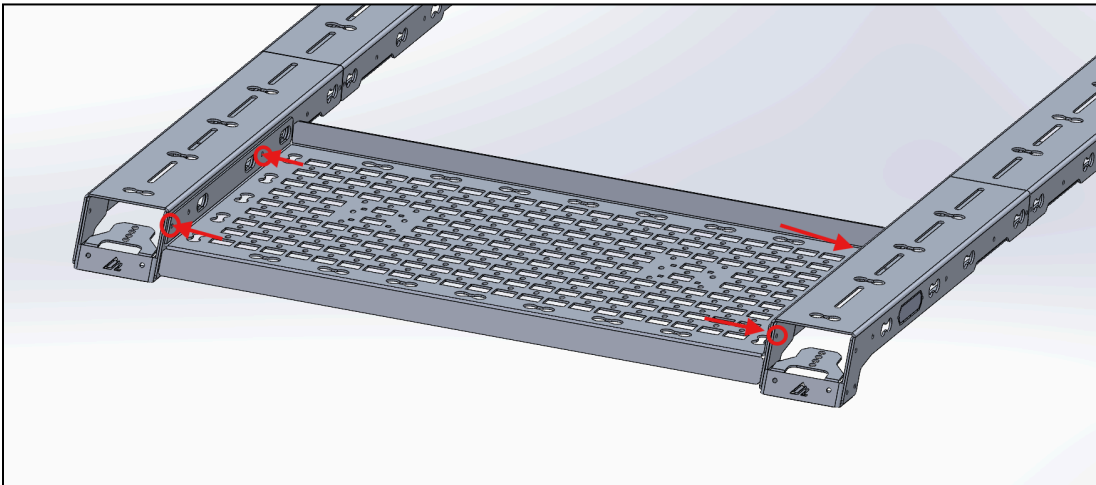
Note: If you intend on positioning one of the rails in the furthest position back, towards the license plate, ensure that the brake light cut out rails are positioned here, facing out the rear of the car



Step 5 - Additional Attachments

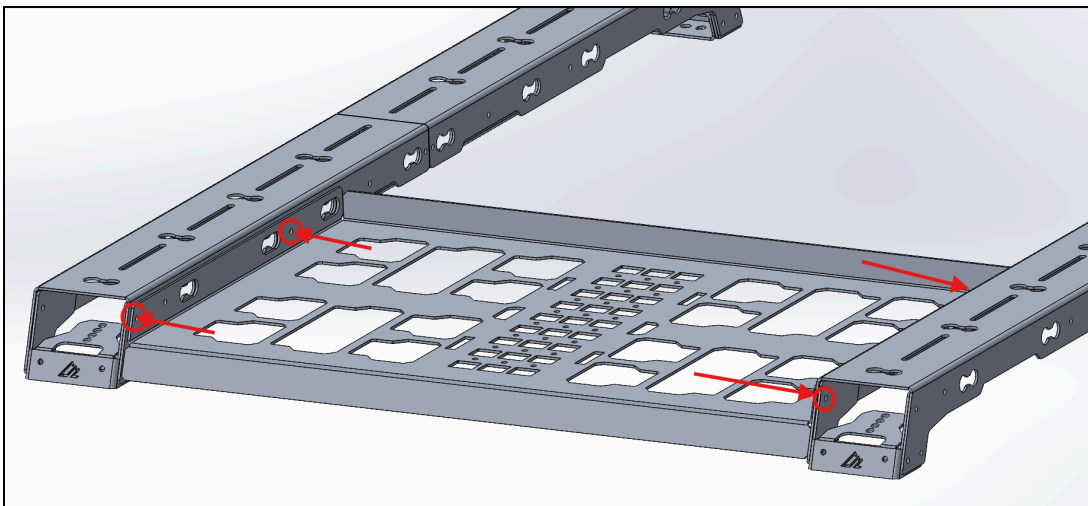
i) Rotopax MOLLE:

To attach this component, simply align the diagonal edge to either the driver or passenger side and make sure the holes on the edge flange are concentric. Once done, use the (4) M8x24mm button head bolts, (4) M8 nuts, and (4) M8 washers in the rotopax MOLLE hardware pack to fasten the platform to the two rails. Place one washer between the bolt and flange and the other between the nut and the flange



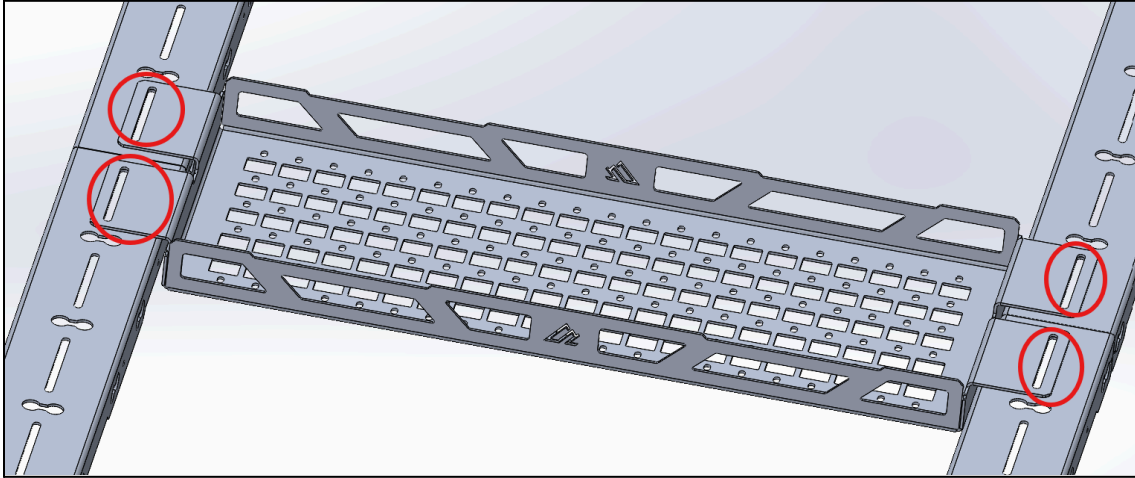
ii) Packout platform:

The Packout Platform has an identical attachment process, simply align the diagonal edge to either the driver or passenger side and make sure the holes on the edge flange are concentric. Once done, use the (4) M8x24mm button head bolts, (4) M8 nuts, and (4) M8 washers in the packout platform hardware pack to fasten the platform to the two rails. Place one washer between the bolt and flange and the other between the nut and the flange



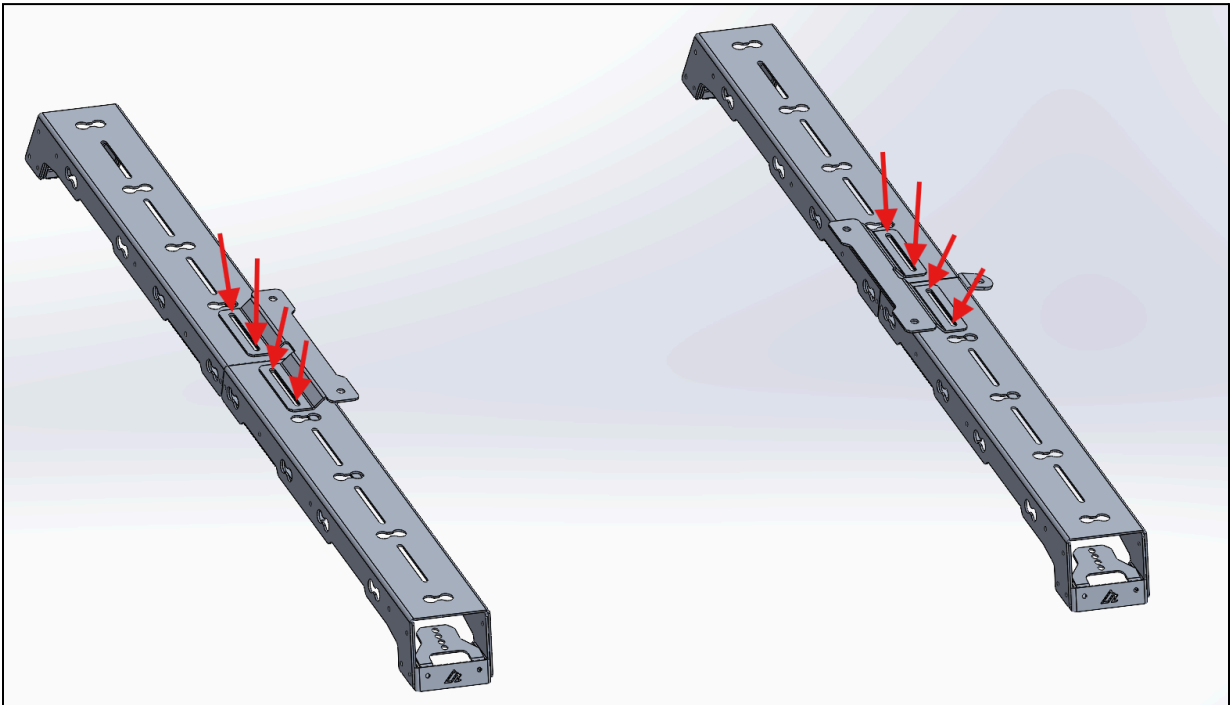
iii) MOLLE Tray:

The MOLLE tray can be positioned on any of the two consecutive slots on either side and fastened to the rail using (8) M6x14mm button head bolts and (8) M6 locknuts.



iv) MAXTRAX Mounting Brackets:

The MAXTRAX Brackets install in the exact same fashion as the MOLLE tray. It can be positioned on any of the two consecutive slots on either side and fastened to the rail using (8) M6x14mm button head bolts and (8) M6 locknuts per side.



Step 6: Share Your Photos

We take great pride in building our products and we hope that pride extends to you after installing your Ford Ranger and Ranger Raptor Bed RAIL(s). If you are able to share your photos online (Facebook and Instagram), please tag **@AmericanAdventureLab**. We would love to see how it turned out and give you some reciprocal attention in return!

Congrats! You're all done!

Thank you!

At American Adventure Lab, we strive to improve anywhere we can. If you experience any issues with this product or have any suggestions, please let us know.

If you have any questions or concerns, please don't hesitate to reach out to us at 385.202.4188 or via email at Support@erp.adventurelab.com.

